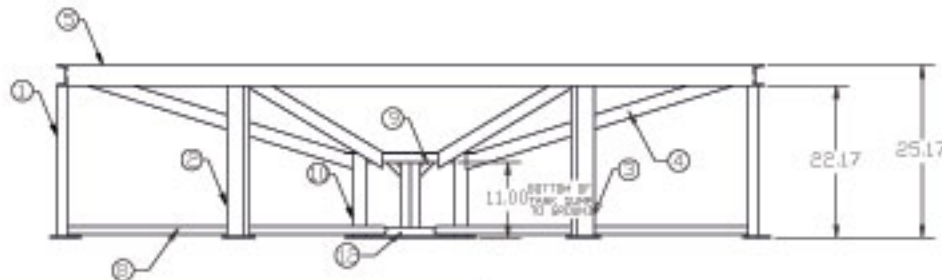
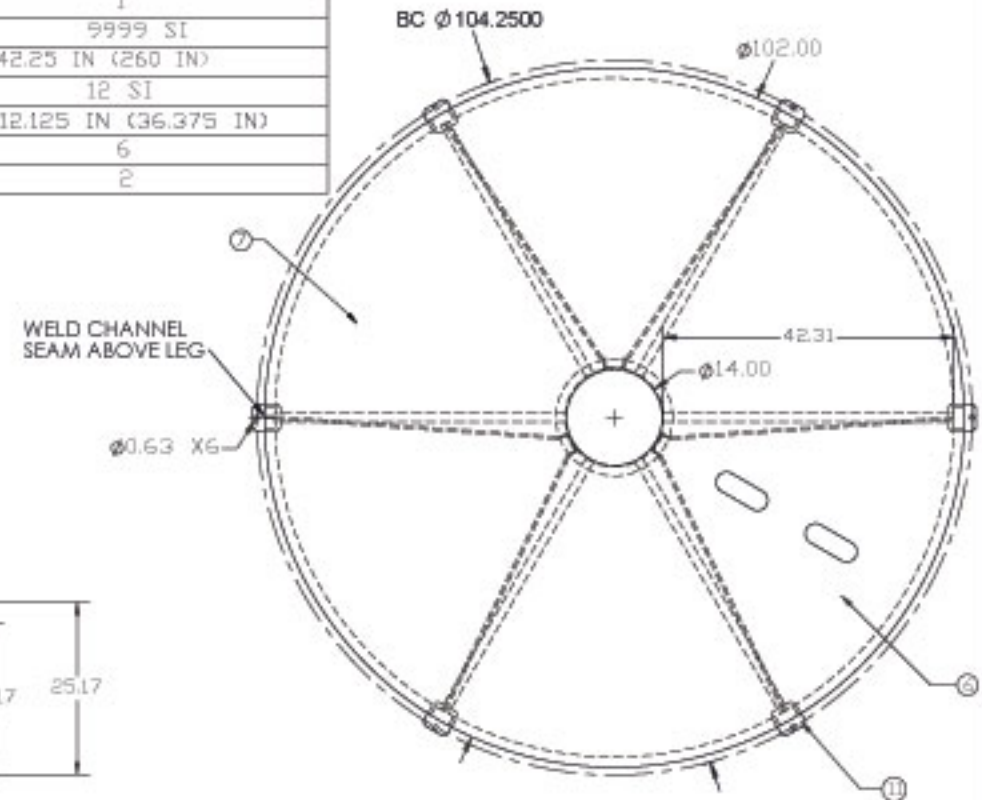


KEY	PART NUMBER	MATERIAL	DESCRIPTION	QTY.
1	CB102-15ST-1	C03X4.1	3" MILD STEEL CHANNEL	6 @ 21 15/16 IN (31 5/8 IN)
2	CB102-15ST-2	C03X4.1	3" MILD STEEL CHANNEL (LEFT)	1
3	CB102-15ST-3	C03X4.1	3" MILD STEEL CHANNEL (RIGHT)	1
4	CB102-15ST-4	B03750x20000	3/8" x 2" FLAT	6 @ 43.75 IN (264 IN)
5	CB102-15ST-5	C03X4.1	3" MILD STEEL CHANNEL	330 IN
6	CB102-15ST-6	S-14GA	14 GA SHEET (HOLES)	1
7	CB102-15ST-7	S-14GA	14 GA SHEET	9999 SI
8	CB102-15ST-8	P10000	1" SIZE TUBING	6 @ 42.25 IN (260 IN)
9	CB102-15ST-9	S-2500	1/4" SHEET	12 SI
10	CB102-15ST-10	C03X4.1	3" MILD STEEL CHANNEL	3 @ 12.125 IN (36.375 IN)
11	SJCB85/90ST-7	SJCB85/90ST-7	1/4" X 4" X 4" LEG PAD	6
12	RAR-14	RAR-14	14" ROLLED ANGLE	2



D	TOLERANCE WAS 1% @ 68°F				
C	ADD B.O.M.			DRAWN / DATE	MATERIAL
B	ADD SUMP CLEARANCE DIM				
A	ADD 1" TO OUTSIDE HEIGHT			APPRD. / DATE	
REV	DESCRIPTION	BY / DATE	CCN		
ALL DIMENSIONS ARE IN DECIMAL INCHES TOLERANCES UNLESS OTHERWISE SPECIFIED DECIMAL ± .125" FRACTION ± 1/4" ANGLE ± 1°				THIRD ANGLE PROJECTION ANSI Y32.1	NOTES: 
DESCRIPTION					STAND FOR $\phi$ 102" 15° CONE BOTTOM TANK
SCALE					N.S.
PART NO.					CB102-15ST