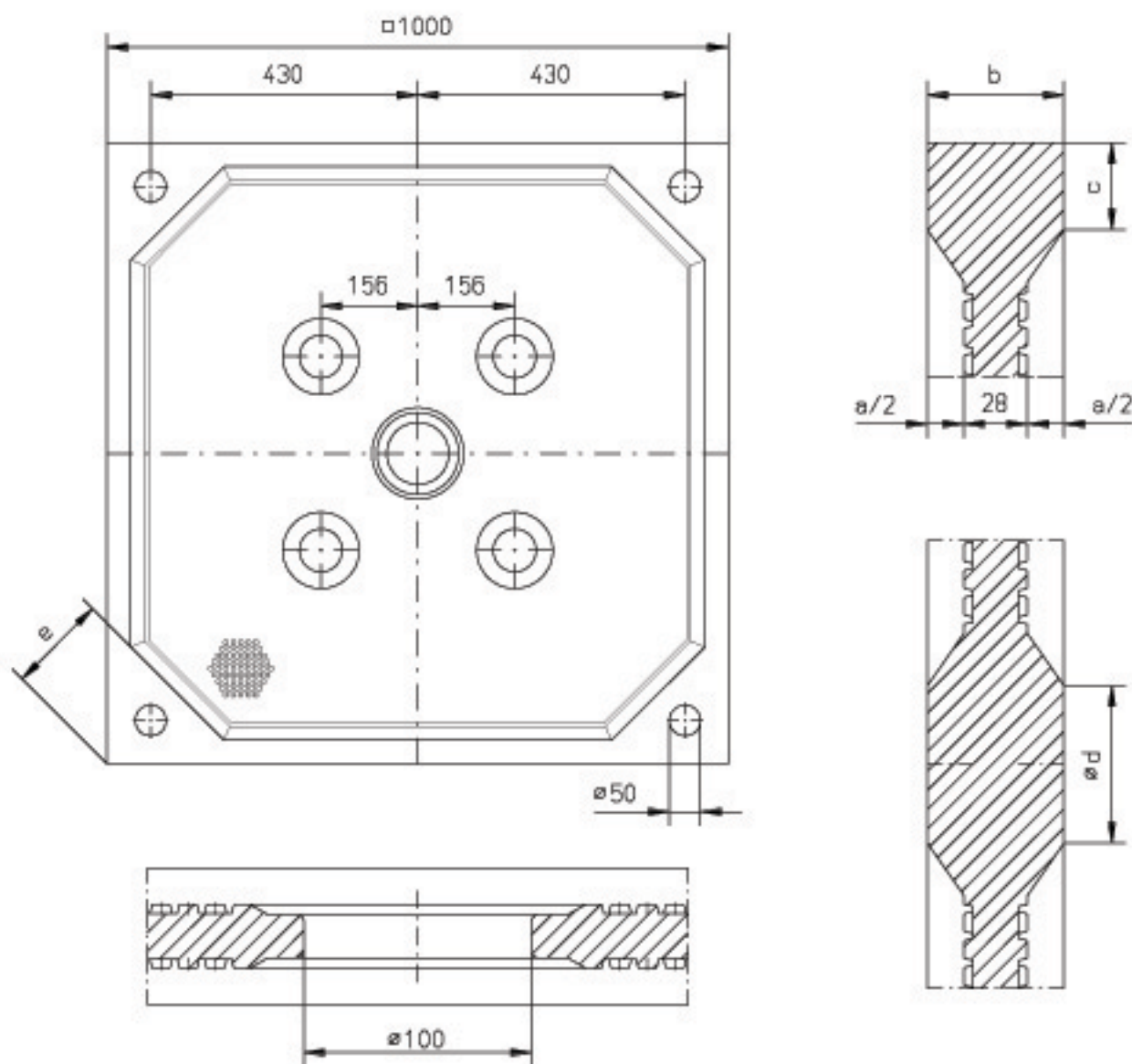


Recessed Filter Plate

KFZ 1000 C ID28 N4 PPH

Filtration Pressure: 8 bar

(23°C)



Cake Thickness	a	[mm]	15*	20	25	30	32	35	40	45	50
Intermediate Plate	b	[mm]	43	48	53	58	60	63	68	73	78
Head / Tail Plate	b	[mm]	49,5	52,0	54,5	57,0	58,0	59,5	62,0	64,5	67,0
Sealing Edge	c	[mm]	49,4	45,6	41,7	37,9	36,3	34,0	30,2	40,0	36,1
ø Stay Boss	d	[mm]	91,7	84,0	76,3	68,6	65,5	60,9	53,2	59,0	51,3
Diagonal Corner	e	[mm]	171,4	167,5	163,7	159,8	158,3	156,0	152,1	162,3	158,5
Sealing Area		[cm ²]	2477	2308	2142	1978	1914	1817	1659	2013	1858
Filter Area		[m ²]	1,493	1,534	1,573	1,612	1,628	1,651	1,688	1,624	1,662
Chamber Volume		[dm ³]	10,7	14,4	18,2	22,1	23,7	26,1	30,1	31,9	35,8
Weight		[kg]	26,5	27,6	28,6	29,6	29,9	30,4	31,2	34,3	35,2

*grooved

01.05.2004