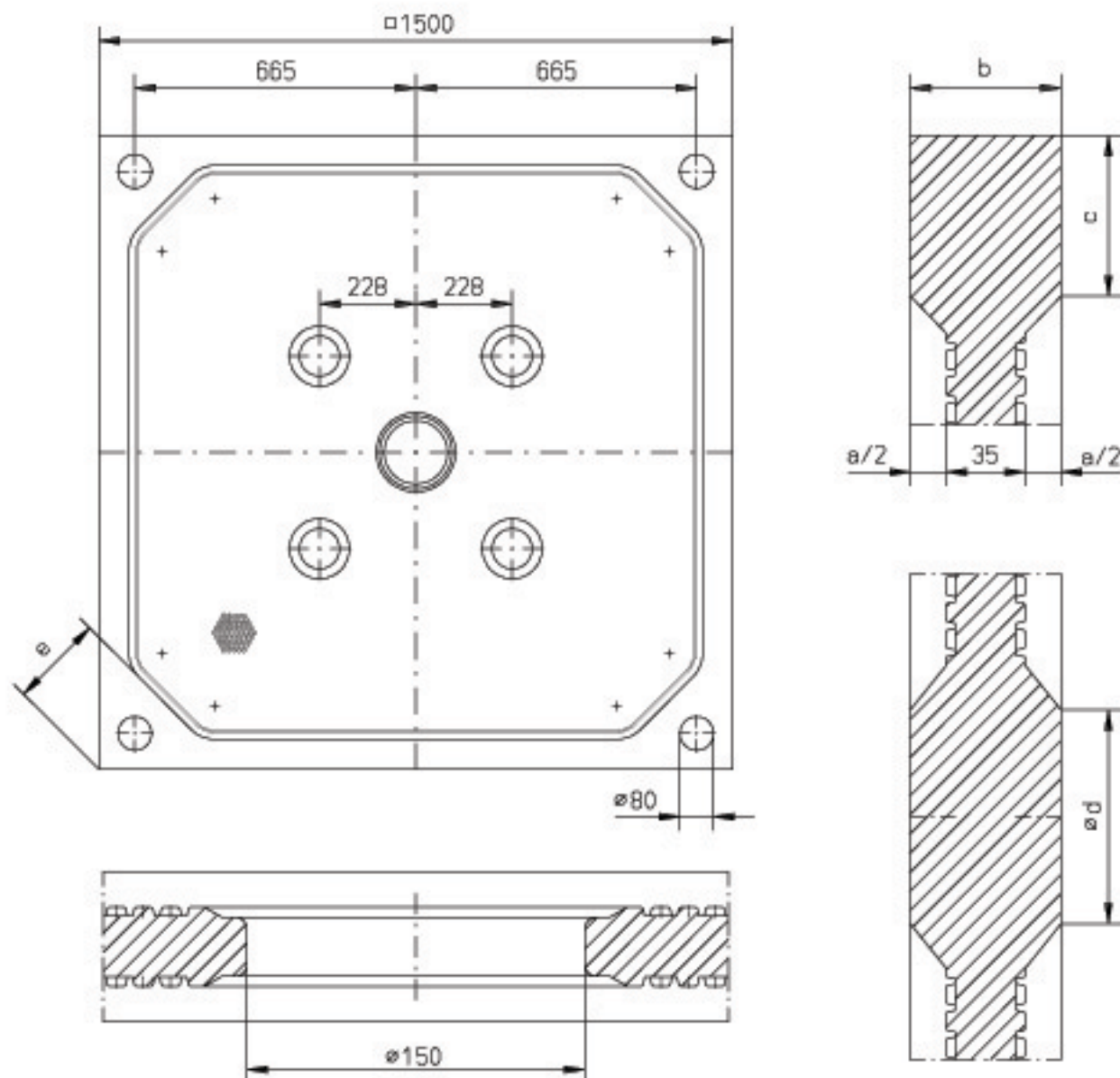


# Recessed Filter Plate

## KFZ 1500 C ID35 N4 PPH

Filtration Pressure: 8 bar

(23°C)



|                    |   |                    |       |       |       |       |       |       |       |       |       |
|--------------------|---|--------------------|-------|-------|-------|-------|-------|-------|-------|-------|-------|
| Cake Thickness     | a | [mm]               | 15    | 20    | 25    | 30    | 32    | 35    | 40    | 45    | 50    |
| Intermediate Plate | b | [mm]               | 50    | 55    | 60    | 65    | 67    | 70    | 75    | 80    | 85    |
| Head / Tail Plate  | b | [mm]               | 49,5  | 52,0  | 54,5  | 57,0  | 58,0  | 59,5  | 62,0  | 64,5  | 67,0  |
| Sealing Edge       | c | [mm]               | 79,2  | 76,3  | 73,4  | 70,6  | 69,4  | 67,3  | 64,5  | 61,8  | 58,9  |
| ø Stay Boss        | d | [mm]               | 113,7 | 106,8 | 100,0 | 93,1  | 90,3  | 86,2  | 79,3  | 72,4  | 65,5  |
| Diagonal Corner    | e | [mm]               | 229,4 | 226,5 | 223,6 | 220,7 | 219,6 | 217,5 | 214,6 | 211,9 | 209,1 |
| Sealing Area       |   | [cm <sup>2</sup> ] | 5265  | 5075  | 4887  | 4701  | 4628  | 4501  | 4320  | 4150  | 3975  |
| Filter Area        |   | [m <sup>2</sup> ]  | 3,407 | 3,456 | 3,505 | 3,554 | 3,573 | 3,605 | 3,652 | 3,697 | 3,743 |
| Chamber Volume     |   | [dm <sup>3</sup> ] | 24,85 | 33,33 | 41,90 | 50,56 | 54,05 | 59,38 | 68,23 | 77,14 | 86,17 |
| Weight             |   | [kg]               | 72,6  | 75,0  | 77,3  | 79,4  | 80,3  | 81,5  | 83,5  | 85,5  | 87,3  |